

GEZE ActiveStop

New door control



GEZE

BEWEGUNG MIT SYSTEM

Doors can do much more than you can imagine.

Enter your rooms more conveniently than ever before: The GEZE ActiveStop door damper can stop doors gently, close them quietly and keep them open with ease. That means that slamming doors, trapped fingers and holes in walls or furniture are a thing of the past. Thanks to its compact dimensions the door damper is hardly visible, thus conforming to the most demanding designs. Using GEZE ActiveStop you can combine functionality, safety and aesthetics – and experience an entirely new door control.

GEZE ActiveStop

Three functions for greatly enhanced control and safety:



Gentle stopping

Damaged walls or furniture behind doors are not only unsightly but most of all unnecessary. GEZE ActiveStop brakes the swing upon opening and stops the door in the desired position.



Silent closing

Thanks to the active damping, the door closes slowly and silently. GEZE ActiveStop not only prevents loud banging and irritating door damages but also minimises the risk of injury.



Keeping open with ease

GEZE ActiveStop keeps the door open to prevent it from slamming. Separate doorstoppers are no longer needed. The holding position can be set individually using the adjustable opening angle.



Find out about GEZE ActiveStop online at:
www.activestop.geze.com

Discover the advantages of GEZE ActiveStop



" Our doors always stop in time. Even if sometimes my hands are full. "



Gentle stopping

With GEZE ActiveStop, you will never again have to deal with annoying wall and furniture damages caused by doors. The intelligent damping brakes doors in time even when opened with full swing. But it can do much more. Following the smooth braking, GEZE ActiveStop opens the door independently and safely up to the individually adjustable holding position. This protects objects behind the door – even if sometimes your hands are full.

"Our doors can withstand any draught."



Keeping open with ease

When there is a strong draught during airing, doors quickly move and start slamming uncontrollably. GEZE ActiveStop actively intervenes keeping the doors open in the desired position without any aids. You can do without additional doorstops on the wall or on the floor – irrespective of how many windows are open.



"The door to my room is much, much, much too silent."



Silent closing

Irritating slamming doors are a thing of the past. GEZE ActiveStop ensures peace and quiet in the house. The active damping also brakes quickly shutting doors gently and then pulls them closed silently. The slow closing not only reduces the noise level. It protects door leaves and frames, minimises the risk of injury - and makes family life more relaxed.

GEZE ActiveStop brings greater comfort to your home. Without compromises.

Can be used anywhere

Thanks to the compact dimensions, GEZE ActiveStop fits into virtually every room door of up to 45 kg. In other words, into practically all standard doors.

Individually adjustable

You can adjust how far your door should open and how strongly GEZE ActiveStop should damp it on opening and closing as needed and based on your home situation.



Gentle stopping



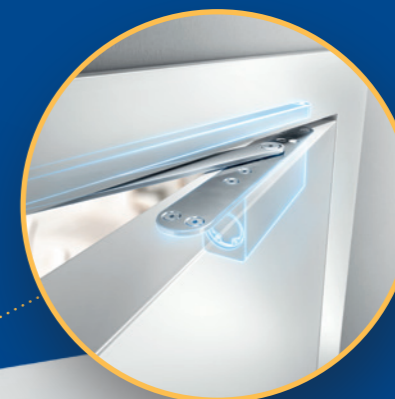
Keeping open with ease



Silent closing

Reliable over the long term

GEZE ActiveStop is the product of durable and long-lasting workmanship "Made in Germany". The door damping offers unlimited top quality with functionality, safety and aesthetic design.



Virtually invisible: GEZE ActiveStop is distinguished only by its performance.



The desired opening angle is also the holding position and can be continuously adjusted between 80° and 140°.

25°

Door damping and closing in closing direction

The closing door is gently braked from an angle of 25° and automatically pulled closed.

60°

Free swing between 25° and 60°

GEZE ActiveStop allows your door free movement over this range. And regardless of how much swing the door has – the damping catches it reliably and safely from 25° or 60°.

140°

Door damping and closing in opening direction

From an angle of 60° the opening door is gently braked and automatically pulled open – up to the individually adjustable opening angle of max. 140°.



GERMAN
DESIGN
AWARD
WINNER
2016



Focus Open 2015
Silver

Find out about GEZE ActiveStop online at:
www.activestop.geze.com

New door control in detail.

Information about GEZE ActiveStop.

Areas of application

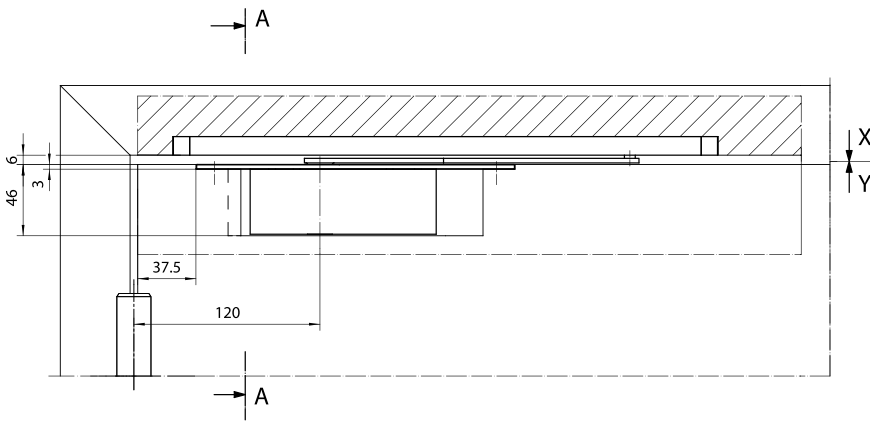
Door type	wooden interior doors, rebated and closing flush doors
Leaf weight	optimal operation up to 45 kg
Leaf width	optimal operation up to 1,100 mm
Leaf thickness	from 38 mm
Door hinge	for DIN left and DIN right
Installation type	concealed
Rebate	ca. 5 mm clearance in handle area

Product characteristics

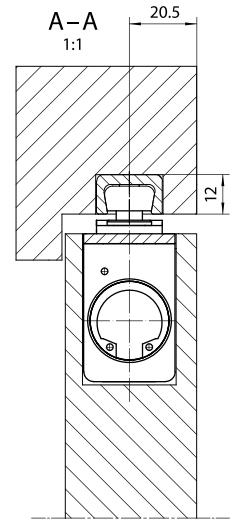
Door damping and closing	closing direction – Starting from ca. 25° opening direction – Starting from ca. 60°
Free swing area	freely selectable door position – between 25° and 60°
Door opening angle	continuously adjustable – between 80° and 140°
Secured final position	safe holding of the door in the open position, no doorstop needed
Damping strength	can be set using a valve
Protection against overload	with integrated safety valve
Door latch block	included in delivery, use according to customer wishes or door use
Standard colour	fine silver
Low-maintenance	designed for maintenance-free operation in private room doors

Ordering information

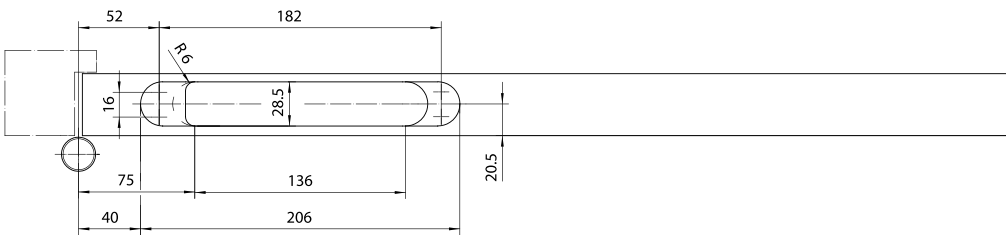
Suppliers	hardware dealers or pre-assembled door leaves and frames from specialist door dealers
Order number	163411 (ready-to-install complete set in fine silver)
Scope of delivery	ActiveStop, slide rail with slide block and end buffer, connection handle, universal door latch block, installation material



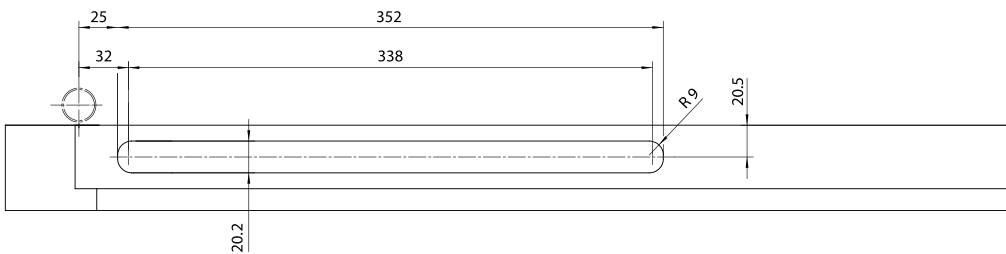
Longitudinal section



Cross-section



Door leaf finish



Door frame finish

www.activestop.geze.com

GEZE GmbH

Reinhold-Vöster-Straße 21–29

71229 Leonberg

Germany

Telephone: +49 7152 203 0

Fax: +49 7152 203 310

E-mail: info.de@geze.com

This brochure was presented to you by: